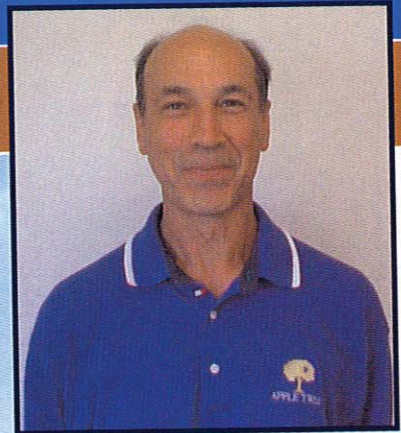


Apple Tree Construction

509-972-2740



Glen Durall



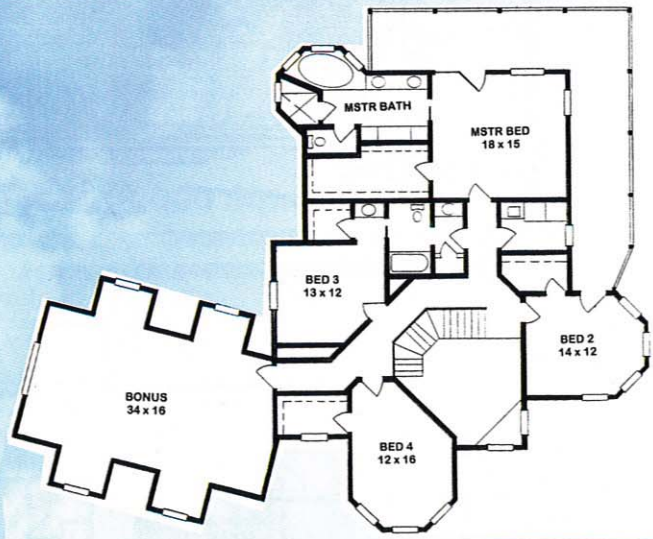
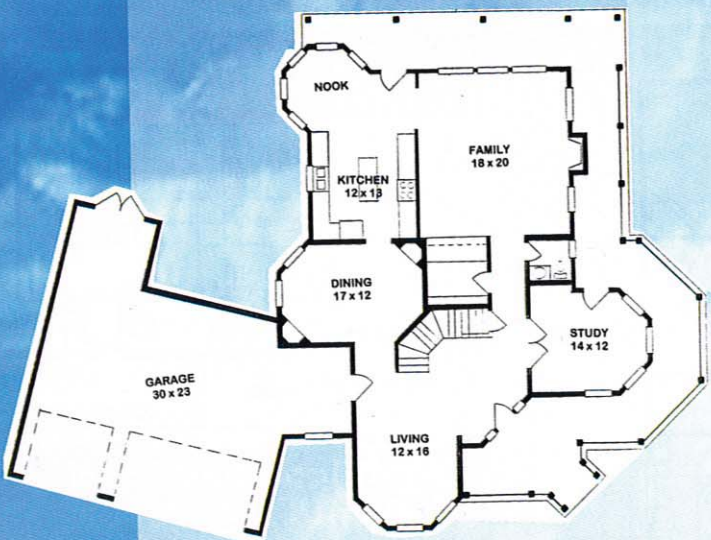
Inspired by the grandeur of Victorian architecture, this spectacular two-story home has been carefully designed to capture panoramic views of the 13th and 14th holes of the Apple Tree Golf Course and the surrounding Yakima Valley. A classic exterior with rounded turrets and a nostalgic wrap-around porch welcome you to a grand entry, leading to 3,966 square feet of elegant but comfortable living space.

To the right of the foyer, a spacious study features fairway views of the 14th hole with convenient porch access. To the left, a traditional Victorian parlor is ideal for a formal living, piano, or sitting room. A generous great room with gas fireplace is the centerpiece for entertaining guests. The gourmet kitchen features granite countertops, Kitchenaid Architect Series appliances, and high-end Huntwood cabinetry. True to the style of the home, touches in the formal dining room include a corner china cabinet and a cozy built-in fireplace.

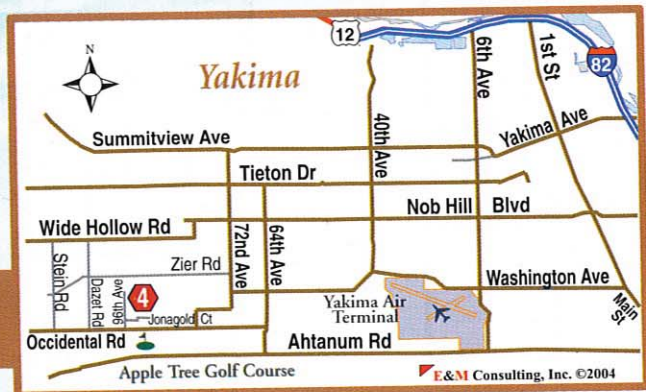
Upstairs, you will feel on top of the world with territorial views to the south and east from the master suite and wrap-around deck. Features of the master suite include tiled shower, his and hers vanities, unique jetted tub, and large walk-in closet. Three additional bedrooms are anything but ordinary, offering residents or guests a different shape and view in each room. And best of all, above the three-car garage, let your imagination run wild with over 500 square feet of bonus space.



3,966 Square Feet



**2207 South 96th Ave
Yakima, WA 98908**



4

From I-82 Eastbound (Seattle/Ellensburg): Take the Hwy 12 West/White Pass/Naches exit. Take the 40th Ave. exit and go straight through the light. Follow 40th Ave. to Washington, take a right. At 64th Ave. take left. Take a right on Occidental, Apple tree is to your left, up about 1 1/2 miles.

From I-82 Westbound (Tri-Cities/Portland): Take the Union Gap exit and follow Main St. to Ahtanum Rd. (1st light) and take a left. Follow Ahtanum to 86th Ave. Take a left on Occidental and Apple Tree will be on your left.

E&M Consulting, Inc. ©2004