



KEVIN PATRICK

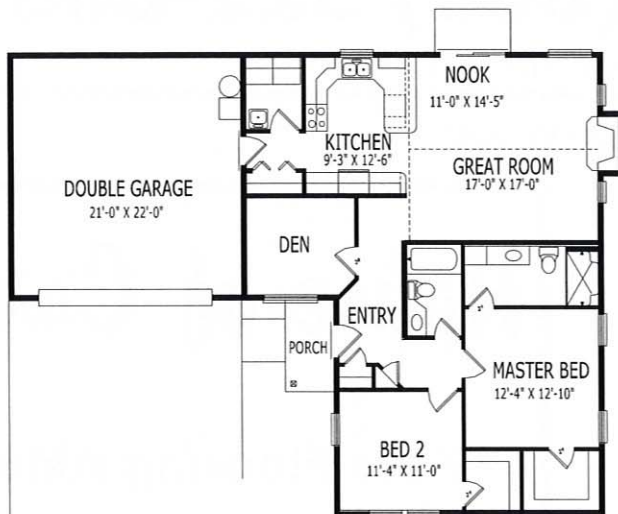
• 509-961-9706 •



TERRY PATRICK CONTRACTOR INC.



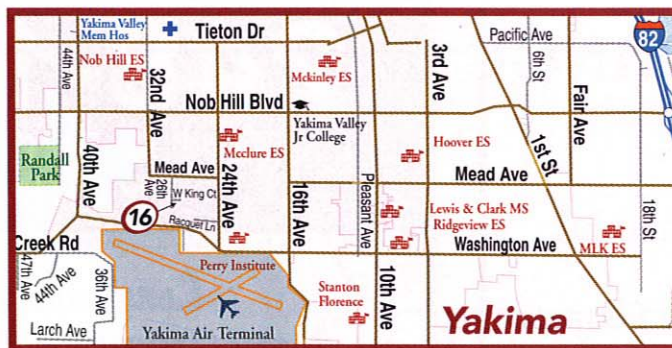
1,280 Square Feet



MAIN FLOOR PLAN

Directions:

From South 24th Ave at West Mead Ave, go West on Mead approximately two blocks to South 26th Ave. Turn left on South 26th Ave. Follow South 26th Ave to West King Court. Make a left on West King Court and our home is 2506 West King Court.



2506 West King Court • Yakima, WA 98902

TERRY PATRICK CONTRACTOR

category D

Looking for a delightful retirement home with an easy-to-maintain yard? Or a first home that makes excellent use of space? Then you just might find it here in this quiet, new development on S. 26th Ave off Mead. All 1,280 square feet of this home have been maximized at every opportunity! The master suite has a walk-in-closet and oversized shower in the roomy bathroom. The second bedroom also features a walk-in closet and the bonus room is perfectly located for a home office or craft room, with plenty of natural light. A spacious kitchen with plenty of counter and cupboard space opens into a vaulted-ceiling great room, complete with sliding French doors and a gas fireplace.

Kevin Patrick of Terry Patrick Contractor, Inc. (TPC) has invested in quality upgrades throughout this home, from classic recessed lighting to door hinges and handles. Although this is sold, there are several others in the development, all with completely customized floor plans designed by Ron Pelson of Traditional Designs, Inc.

kpatrikcontractor@msn.com

16