

New Creation

10

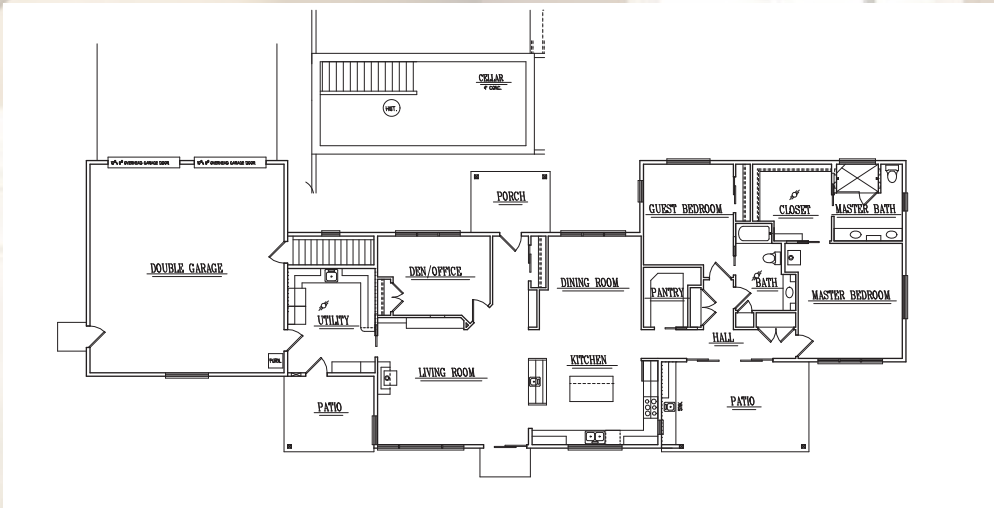
Category A

434 Schlect Rd. | Yakima

Ultimate Green Estate

New Creation Construction, LLC is excited to feature this home on the 2011 CWHBA Tour of Homes. This 4-Star Built Green Home offers a 360° view on a beautiful setting. The home was truly built with energy efficiency in mind through-out. The interior features include cork flooring, 76% efficiency wood-burning stove, complete wine & vegetable cellar, solar hot water system, VOC-free paint, wine bar, Hickory cabinets, handi-cap accessible shower with no curb, and is wired for generator back-up system. Included in the project was exterior landscape design and sprinkler system that surrounds the in-ground pool, outdoor kitchen area, entry water feature, extensive use of pavers, and a 52' x 40' heated shop with all of the amenities.

We would like to sincerely thank the homeowners for the opportunity to work with them over the past 3+ years during the planning stages and construction process of their home. Thanks also to our exceptional team of staff, sub-contractors, Ron Pelson (Traditional Designs), Ron Olsen (Yakima Valley Cabinets) & Green Energy Management. Specializing in custom home construction, remodeling & light commercial, contact Justin Wolff today to begin planning your project.



Justin Wolff
(509) 966-3550

justin@newcreationconst.com
www.newcreationconst.com
NEWCRL991DA



Directions: West on Tieton Drive to Stone Rd. Take a left on Stone Rd. Drive for about 2.5 miles. Take a right on Schlect Rd (gravel). Drive approx. ¼ mile, turn left into the driveway: 434 Schlect Rd.