

R.A.S. Contracting

13

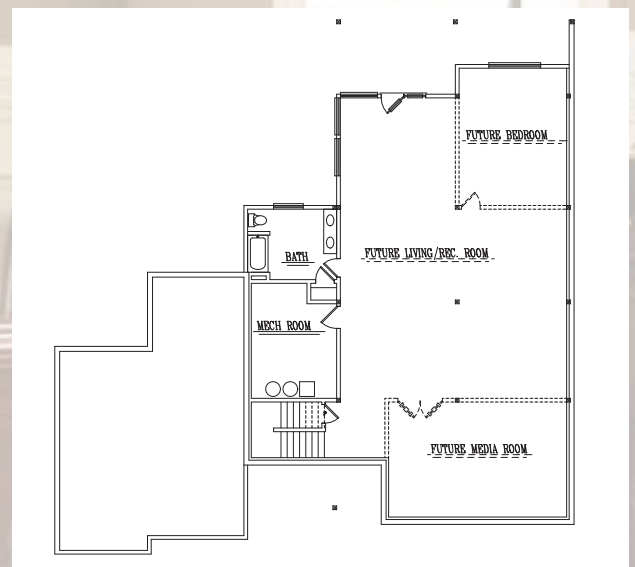
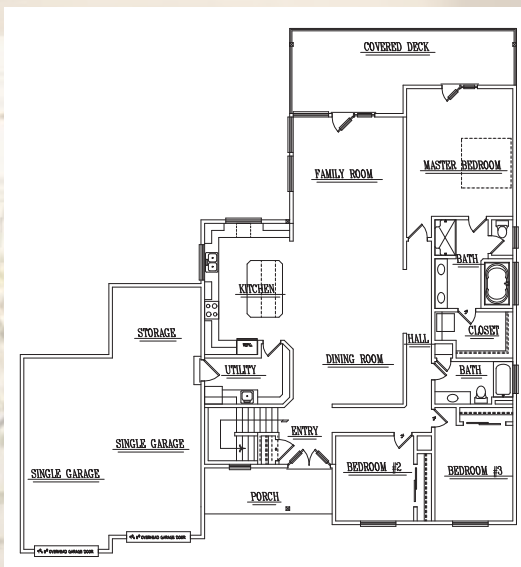
Category B

109 S. 10th Street | Selah

You'll feel on top of the world when you visit R.A.S. Contracting Corp.'s 2011 Tour of Homes entry. Perched high above the Selah Valley, this 4516 SF home is purposely designed to take advantage of the incredible views.



Luxurious elements are combined with a casual open concept plan of 2258 SF on the main floor with another 2258 SF unfinished on the lower level.



Enjoy outdoor living at its finest on the covered patio and deck while the low maintenance landscaping almost takes care of itself. RV parking with a hookup and sani-dump, a three-car garage with a level driveway, and our signature stamped concrete entrance add to this home's appeal.



Roy Sample
509.697.8714

www.rascontracting.com
RASCOC*034QP



Directions: From I-82 westbound take Exit 30 into Selah. Continue through downtown Selah and turn left on Fremont Avenue. Turn left on 10th Street and follow on up the hill to #109 on the left.