

Elite Homes

7

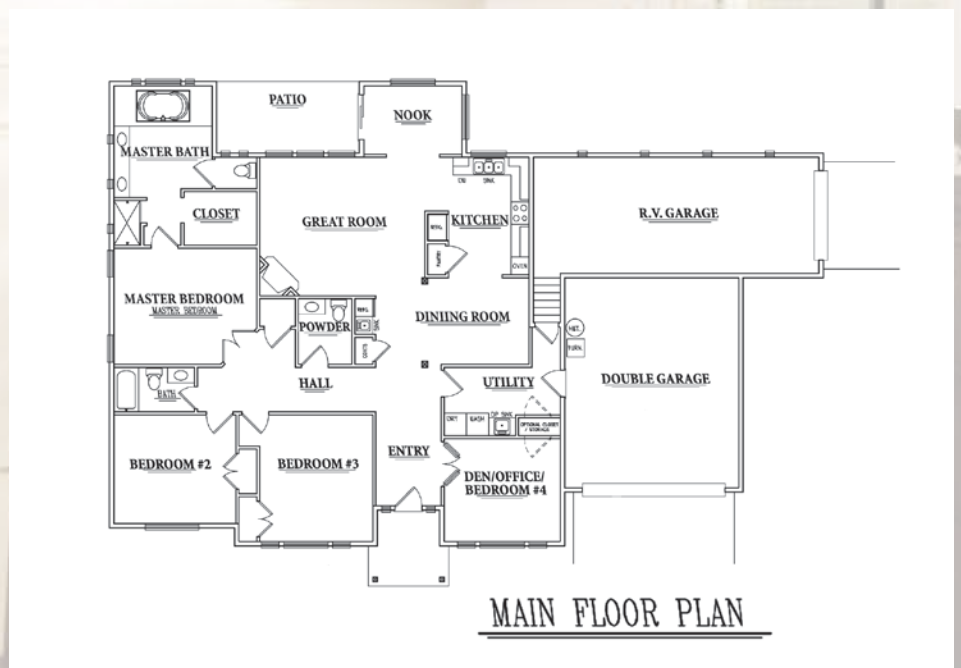
Category C

215 S. 92nd Ave. | Yakima

Another uniquely crafted home built with all the amenities that you would expect. Ten foot ceilings, eight foot doors, custom cabinets with granite tops, a separate bar and refrigerator with a sink, three bedrooms, two and a half baths and set up to accommodate easier access to this one story home.



Featuring an extensive use of hardwoods, tile, granite, crown molding, wainscoting and so much more. Add to it that this home also features an additional attached RV garage with its own private drive. Fully landscaped, fenced yard, situated on an oversized lot in West Valley on a dead end street for security and privacy.



There are thousands of dollars worth of extra's in this home added for the tour by the vendors of Elite Homes with no charge to the prospective owner. All in a neighborhood of new homes and still under 350k.



Elite *EH* Homes
of Yakima, Inc.
Bill Frodsham (509) 307-8705
Sam VanderWeken (509) 307-8704



Sam VanderWeken, Bill Frodsham
509.453.3887
elitehomesofyakima@hotmail.com
ELITEY943BP

Directions: Heading West on Summitview Ave, turn left on S. 92nd Ave, continue straight until you come to the home on the left side. 215 S. 92nd Ave.